



Rainwater harvesting with style



Overground rainwater tanks

Water springs

Downpipe filters



for a greener planet

for a greener planet

Climate change. Our world is currently facing huge challenges. In these times, good examples are needed. Or rather: initiators that are not only preaching sustainability, but put it into practice. Just as we at GRAF are already making an important contribution. After all, it is not only our solutions for rainwater management and other applications related to our water that are thoroughly sustainable, but also the plastic we use to make our products.

For example, we turn short-lived food packaging into EcoBloc infiltration modules, with a lifespan that spans generations. In this way, we can make our cities a little safer against increasing heavy rainfalls. Or rainwater tanks allow us to water our gardens with a clear conscience even during hot spells. Along the way, recycling saves us about 100,000 tonnes of CO₂ every year, which is almost as much as the emissions of over 60,000 cars.

By the way, we recycle our products ourselves. Our raw materials competence centre makes us unique. It is our heart and soul, containing not only all of our innovative power, but also our lifeblood. For a better world for us all - for a greener planet.



The GRAF Recycling Cycle



This is us

The whole world is talking about sustainability. For us, it has long been an integral part of our very identity. We recognised the potential of rainwater early on: "Rainwater is free" was one of our first campaigns back in the 1970s. GRAF water butts have been manufactured in our family business since 1974. Only four years later, the first underground tanks for rainwater harvesting followed. GRAF water butts have been made from recycled material since 1980. The Green Dot was still a long way off back then. Rainwater is still free of charge, by the way. But in times of climate change, drought and heavy rainfall, sustainable water management is much more than that: it is a valuable contribution to our future.

This is what we stand for



75 %
recycled content



Every year **100.000 T LESS CO₂** emissions through recycling. This is equivalent to the CO₂ emissions of 60,000 cars



Recycled material
FREE FROM HARMFUL SUBSTANCES



Products are
FULLY RECYCLABLE



Environmental products for
SUSTAINABLE water management



LONG SERVICE LIFE and spare parts supply



80% renewable energy share used in production



State-of-the-art production facilities for **LOW ENERGY CONSUMPTION**

For more information, see:
www.graf.info/sustainability



Rainwater harvesting is an active way to protect the environment!



This is how environmental protection begins

Rainwater harvesting is good for the environment. Collecting small amounts of rainwater already conserves our groundwater reserves and saves the costly treatment of drinking water and the associated CO2 emissions.

Save money

Drinking water is an expensive commodity – far too precious to be used for watering plants. Rainwater harvesting is a real alternative here. GRAF offers stylish tanks for rainwater harvesting in the garden that are easy on the pocket and are also a visual pleasure.

Experts irrigate with rainwater

When it comes to watering plants, there is nothing better than rainwater. Clean, soft and at a pleasant temperature, it falls from the sky for free. This makes it clearly superior to cold and often hard tap and ground water. As a result, rainwater tanks are becoming a standard element in more and more gardens.

Special filters are used for the ideal connection to the downpipe, which, in addition to filtering the precious water, also prevents the tank from overflowing.

Stylish tanks for every taste

Choose your tank from over 90 shapes, colours and sizes

MODERN LINE

Stylish and state-of-the-art
from page 11



EXCLUSIVE LINE

For the highest quality demands
from page 18



CLASSIC LINE

Decorative rainwater tanks
from page 26



BASIC LINE

Indispensable for best water quality
and convenient use
from page 52



TIP

Online product advisor
www.graf.info/produktberater

This is GRAF quality



The integrated planter tray is easily removed and has a depth of 20 cm which allows for individual design with all 2in1 rainwater storage tanks.

DOWNPIPE FILTER AND TANK ACCESSORIES

from page 58

RECYCLING INSIDE

75% of all GRAF products are made from recycled raw materials. Some products even by 100%. The tank material is fully recyclable. Long-life product design is a top priority as early as during the product development phase. This ensures less environmental impact in the long run.

CHILDPROOF

Due to the closed tank shape or an integrated cover, stylish tanks by GRAF are basically childproof.

ASSEMBLY ACCESSORIES INCLUDED

Each tank is supplied with matching assembly accessories. This includes, for example, an inlet seal, a plant fleece for rainwater storage tanks that can be planted or wind protection for tanks for wall installation.

UV PROOF

The plastic tanks are protected from sunlight for a long life. Exposure to UV light is reduced to a minimum.

WEATHERPROOF

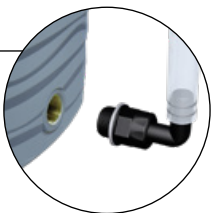
Rainwater tanks are exposed to the weather and large temperature differences. Materials adapted to these conditions assure the tank has long-lasting visual appeal.

THREADED CONNECTION

A standard 19 mm (¾") threaded connection ensures the easy installation of the outlet tap (accessory) without drilling. Water drawing becomes very easy with an outlet tap.

COMFORTABLE CONNECTION

Additional connection for water drawing with the Aqua-Go hose set (accessory) and for residual emptying before the frost period.





PURE NATURE!

The tank with its wavelike surface structure reveals new facets as the light changes throughout the day. This way, the Natura 2in1 rainwater storage tank sets lively accents on your terrace.

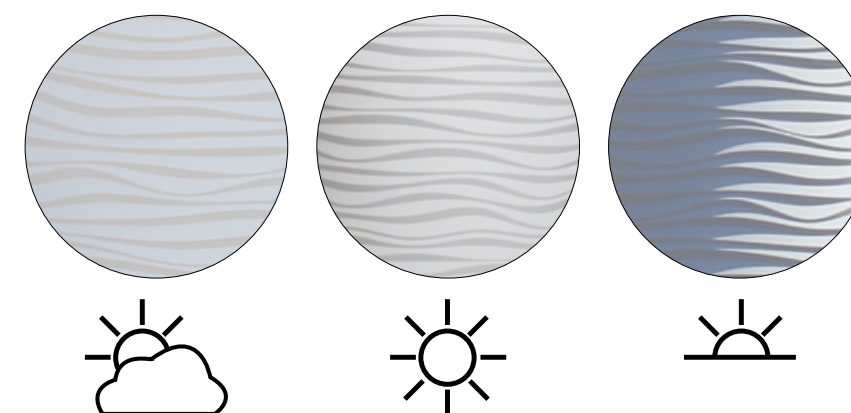


Figure on the left:
Natura 2in1 rainwater storage tank 350 L sahara



Natura 2in1 rainwater storage tank



| Volume [L] | ø top [cm] | ø bottom [cm] | Height [cm] | Weight [kg] | Item no. arctic | Item no. sahara | Item no. ocean | Item no. graphite grey |
|------------|------------|---------------|-------------|-------------|-----------------|-----------------|----------------|------------------------|
| 210 | 58 | 42 | 110 | 10 | - | - | - | 326156 |
| 350 | 62 | 50 | 150 | 15 | 326150 | 326152 | 326153 | 326154 |



TIP
Chrome outlet tap design
item no. 330254
For details see page 66



Figure above:
Natura 2in1 rainwater storage tank
210 L graphite grey

Figure on the left:
The tank has two high-quality integrated brass threads

Figure on the right:
Natura 2in1 rainwater storage tank
350 L arctic





Color 2in1 rainwater storage tank



| Volume [L] | ø top [cm] | ø bottom [cm] | Height [cm] | Weight [kg] | Item no. apple | Item no. tomato | Item no. coco |
|------------|------------|---------------|-------------|-------------|----------------|-----------------|---------------|
| 350 | 62 | 50 | 150 | 15 | 326100 | 326102 | 326105 |



TIP
 Chrome outlet tap design
 item no. 330254
 For details see page 66

Figure above:
 Color 2in1 rainwater storage tank 350 L tomato

Figure on the left:
 The tank has two high-quality integrated brass threads

Figure on the right:
 Color 2in1 rainwater storage tank 350 L coco





Stone 2in1 rainwater storage tank



| Volume [L] | ø top [cm] | ø bottom [cm] | Height [cm] | Weight [kg] | Item no. silver | Item no. lava |
|------------|------------|---------------|-------------|-------------|-----------------|---------------|
| 210 | 58 | 42 | 110 | 10 | - | 326142 |
| 350 | 62 | 50 | 150 | 15 | 326140 | 326141 |



TIP
Chrome outlet tap design
item no. 330254
For details see page 66



Figure above:
Stone 2in1 rainwater storage tank 210 L lava

Figure on the left:
The tank has two high-quality integrated
brass threads.

Figure on the right:
Stone 2in1 rainwater storage tank 350 L
silver



TIP
Speedy rain collector
Downpipe filter with filter insert
item no. 503040
For details see page 61





Antique amphora

dark granite



terracotta

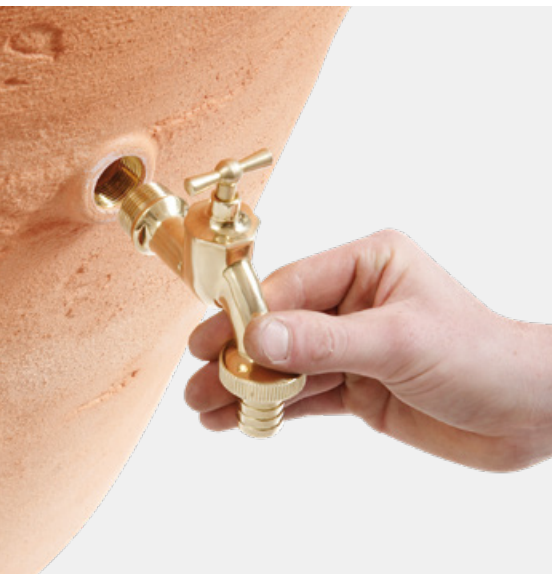


Due to the manufacturing process, each antique amphora is unique.

| Volume [L] | ø max [cm] | Width with handles [cm] | Height [cm] | Depth of integrated planter tray [cm] | Weight [kg] | Item no. terracotta | Item no. dark granite |
|------------|------------|-------------------------|-------------|---------------------------------------|-------------|---------------------|-----------------------|
| 250 | 70 | 79 | 108 | 15 | 15 | 211601 | 211609 |
| 360 | 78 | 88 | 120 | 17 | 20 | 211602 | 211610 |
| 600 | 92 | 104 | 142 | 20 | 30 | 211612 | 211614 |

Antique wall amphora

| Volume [L] | Depth [cm] | Width with handles [cm] | Height [cm] | Depth of integrated planter tray [cm] | Weight [kg] | Item no. terracotta | Item no. dark granite |
|------------|------------|-------------------------|-------------|---------------------------------------|-------------|---------------------|-----------------------|
| 260 | 54 | 88 | 120 | 17 | 20 | 211603 | 211611 |



TIP

Brass outlet tap

Item no. 220011

For details see page 66



Figure above:
Antique amphora 600 L terracotta

Figure on the left:
The tank has two high-quality integrated brass threads

Figure on the right:
Antique amphora 600 L dark granite




TIP

Speedy rain collector

Downpipe filter with filter insert

item no. 503040

For details see page 61





Woody wall tank



darkwood



lightwood

Each Woody is unique
due to the manufacturing
process.

| Volume [L] | Depth [cm] | Width [cm] | Height [cm] | Weight [kg] | Item no. darkwood | Item no. lightwood |
|---------------|---------------|---------------|----------------|----------------|----------------------|-----------------------|
| 350 | 40 | 124 | 100 | 35 | 212200 | 212201 |



TIP
Brass outlet tap
Item no. 220011
For details see page 66



Figure above:
Woody wall tank darkwood

Figure on the left:
The tank has three high-quality
integrated brass threads

Figure on the right:
Woody wall tank lightwood



TIP
Speedy rain collector
Downpipe filter with filter insert
item no. 503040
For details see page 61

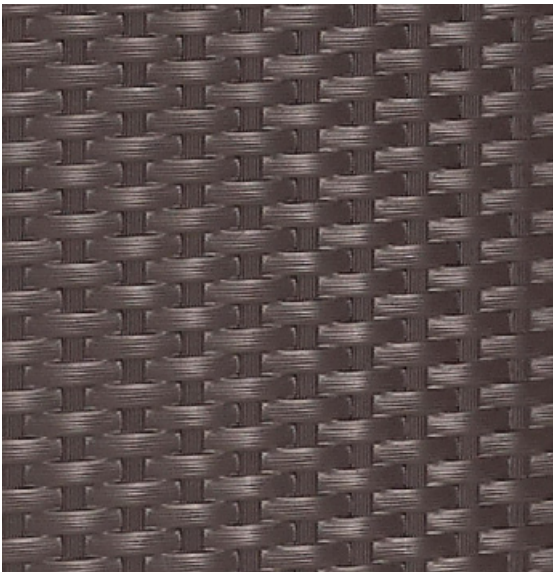




Sunda wall tank



| Volume [L] | Depth [cm] | Width [cm] | Height [cm] | Weight [kg] | Item no. mocca |
|---------------|---------------|---------------|----------------|----------------|-------------------|
| 300 | 40 | 80 | 118 | 16 | 212100 |



TIP
Brass outlet tap
Item no. 220011
For details see page 66



Figure on the left:
The tank has two
integrated threads





Rocky wall tank



redstone



dark granite



sandstone

Each Rocky is unique due to the manufacturing process.

| Volume [L] | Depth [cm] | Width [cm] | Height [cm] | Weight [kg] | Item no. redstone | Item no. dark granite | Item no. sandstone |
|------------|------------|------------|-------------|-------------|-------------------|-----------------------|--------------------|
| 400 | 40 | 120 | 100 | 35 | 326131 | 326130 | 326132 |



TIP
Chrome outlet tap
Item no. 330282
For details see page 66



Figure above:
Rocky wall tank redstone

Figure on the left:
The tank has two high-quality integrated brass threads

Figure on the right:
Rocky wall tank dark granite

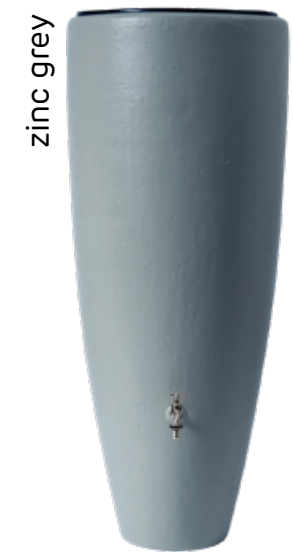


TIP
Speedy rain collector
Downpipe filter with filter insert
item no. 503040
For details see page 61





2in1 water tank



| Volume [L] | ø max. [cm] | Height [cm] | Weight [kg] | Item no. mocca | Item no. zinc grey |
|------------|-------------|-------------|-------------|----------------|--------------------|
| 300 | 62 | 145 | 12 | 326109 | 326111 |



TIP
Chrome outlet tap design
item no. 330254
For details see page 66

Figure above:
2in1 water tank zinc grey

Figure on the left:
The tank has two integrated threads

Figure on the right:
2in1 water tank mocca



TIP
Speedy rain collector
Downpipe filter with filter insert
item no. 503040
For details see page 61



Linus 2in1 rainwater storage tank



| Volume [L] | ø top [cm] | ø bottom [cm] | Height [cm] | Weight [kg] | Item no. zinc grey |
|------------|------------|---------------|-------------|-------------|--------------------|
| 220 | 58 | 40 | 120 | 10 | 326170 |



TIP
Chrome outlet tap design
item no. 330254
For details see page 66

Figure on the left:
The tank has two
integrated threads



TIP
Speedy rain collector
Downpipe filter with filter insert
item no. 503040
For details see page 61



In the figure:
Nordic 2in1 rainwater storage tank 300 L stone grey

CLASSIC LINE



Nordic 2in1 rainwater storage tank

With integrated plant tray for individual design.



graphite grey




stone grey

The tank has two integrated threads

| Volume [L] | ø [cm] | Height [cm] | Weight [kg] | Item no. graphite grey | Item no. stone grey |
|------------|--------|-------------|-------------|------------------------|---------------------|
| 300 | 59 | 118 | 8 | 326180 | 326182 |



TIP
Speedy rain collector
Downpipe filter with filter insert
item no. 503040
For details see page 61





In the figure:
Nordic rainwater storage tank 300 L graphite grey

CLASSIC LINE




Nordic rainwater storage tank



| Volume [L] | ø [cm] | Height [cm] | Weight [kg] | Item no. graphite grey | Item no. stone grey |
|------------|--------|-------------|-------------|------------------------|---------------------|
| 300 | 59 | 118 | 8 | 326181 | 326183 |



TIP
Speedy rain collector
Downpipe filter with filter insert
item no. 503040
For details see page 61





Muro rainwater storage tank



| Volume [L] | ø max. [cm] | Height [cm] | Weight [kg] | Item no. graphite grey |
|---------------|----------------|----------------|----------------|---------------------------|
| 260 | 60 | 93 | 10 | 326160 |
| 420 | 79 | 104 | 16 | 326162 |



TIP
Chrome outlet tap
Item no. 330282
For details see page 66



Figure above:
Muro rainwater storage tank 420 L

Figure on the left:
The tank has two
integrated threads

Figure on the right:
Removable lid for water drawing with
integrated child-proof lock



TIP
Speedy rain collector
Downpipe filter with filter insert
item no. 503040
For details see page 61





Timber rainwater storage tank



| Volume [L] | Ø [cm] | Height [cm] | Weight [kg] | Item no. brown |
|---------------|-----------|----------------|----------------|-------------------|
| 230 | 57 | 93 | 10 | 212135 |



TIP
Brass outlet tap
Item no. 220011
For details see page 66



Figure on the left:
The tank has two
integrated threads

Figure on the right:
Removable lid for water drawing with
integrated child-proof lock



TIP
Speedy rain collector
Downpipe filter with filter insert
item no. 503040
For details see page 61





Barrica rainwater barrel



| Volume [L] | ø max. [cm] | Height [cm] | Weight [kg] | Item no. brown |
|------------|-------------|-------------|-------------|----------------|
| 260 | 65 | 93 | 10 | 212130 |
| 420 | 78 | 105 | 16 | 212132 |



TIP
Brass outlet tap
Item no. 220011
For details see page 66




Figure above:
Barrica rainwater barrel 420 L

Figure on the left:
The tank has two
integrated threads

Figure on the right:
Removable lid for water drawing with
integrated child-proof lock



TIP
Speedy rain collector
Downpipe filter with filter insert
item no. 503040
For details see page 61

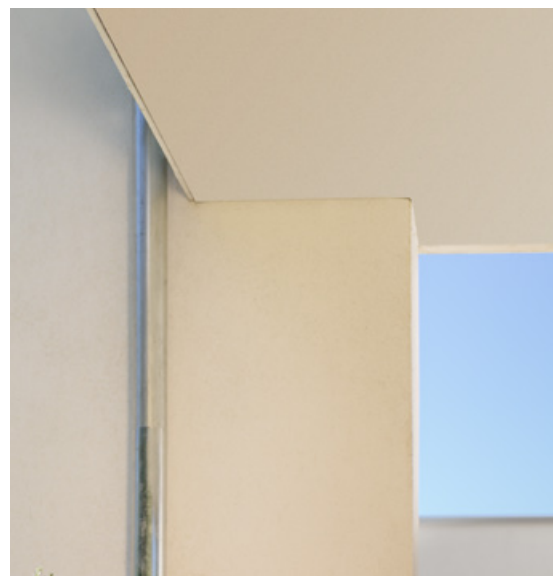




Rain amphora



| Volume [L] | ø max [cm] | ø Cover [cm] | Height [cm] | Weight [kg] | Item no. terracotta |
|------------|------------|--------------|-------------|-------------|---------------------|
| 240 | 59 | 18 | 118 | 8 | 211700 |
| 300 | 68 | 18 | 129 | 10 | 211701 |
| 500 | 79 | 18 | 150 | 14 | 211702 |



TIP
Brass outlet tap
Item no. 220011
For details see page 66



Figure above:
Rain amphora 240 L

Figure on the left:
The tank has two
integrated threads

Figure on the right:
Rain amphora 300 L



TIP
Speedy rain collector
Downpipe filter with filter insert
item no. 503040
For details see page 61





Column tank



| Volume [L] | ø max [cm] | ø Cover [cm] | Height [cm] | Weight [kg] | Item no. sand beige | Item no. stone grey |
|------------|------------|--------------|-------------|-------------|---------------------|---------------------|
| 330 | 59 | 18 | 161 | 14 | 326530 | 326531 |
| 500 | 73 | 18 | 193 | 25 | 326510 | 326512 |
| 1000 | 91 | 18 | 222 | 44 | 326505 | 326506 |
| 2000 | 118 | 18 | 223 | 75 | 326540 | - |

Column wall tank

| Volume [L] | Depth [cm] | Width [cm] | Height [cm] | ø Cover [cm] | Weight [kg] | Item no. sand beige |
|------------|------------|------------|-------------|--------------|-------------|---------------------|
| 550 | 52 | 88 | 212 | 18 | 32 | 326521 |



TIP

Chrome outlet tap

Item no. 330282

For details see page 66

Figure above:
Column tank sand beige 330 L

Figure on the left:
The tank has two integrated threads

Figure on the right:
Column tank stone grey 330 L



TIP

Speedy rain collector

Downpipe filter with filter insert

item no. 503040

For details see page 61



Elegance wall tank

stone grey



sand beige



| Volume [L] | Width [cm] | Depth [cm] | Height [cm] | Weight [kg] | Item no. stone grey | Item no. sand beige |
|------------|------------|------------|-------------|-------------|---------------------|---------------------|
| 400 | 60 | 60 | 180 | 18 | 212301 | 212302 |



TIP
Chrome outlet tap design
item no. 330254
For details see page 66

Figure above:
Elegance sand beige

Figure on the left:
The tank has two
integrated threads

Figure on the right:
Elegance stone grey



TIP
Speedy rain collector
Downpipe filter with filter insert
item no. 503040
For details see page 61



CLASSIC LINE



Terranova wall tank



| Volume [L] | Width [cm] | Depth [cm] | Height [cm] | Weight [kg] | Item no. graphite grey |
|------------|------------|------------|-------------|-------------|------------------------|
| 275 | 80 | 40 | 105 | 12 | 212120 |



TIP
Chrome outlet tap
Item no. 330282
For details see page 66



Figure on the left:
The tank has two
integrated threads



TIP
Speedy rain collector
Downpipe filter with filter insert
item no. 503040
For details see page 61





Figure shows water spring Wood in lightwood



TIP
Ideal as an additional tapping point for the Garden Comfort, Eco-Plus and Professional complete packages.
www.graf.info/rainwater-harvesting

Figure above:
Wood water spring lightwood
Figure on the left:
Granite water spring darkgranite
Figure on the right:
Rondo water spring stone grey

Water springs



| Water spring | Column [cm] | Base [cm] | Height [cm] | Weight [kg] | Item no. dark granite | Item no. light granite |
|--------------|-------------|-----------|-------------|-------------|-----------------------|------------------------|
| Granite | 13 x 13 | 25 x 25 | 100 | 5 | 356025 | 356026 |

| Water spring | Column [cm] | Base [cm] | Height [cm] | Weight [kg] | Item no. darkwood | Item no. lightwood |
|--------------|-------------|-----------|-------------|-------------|-------------------|--------------------|
| Wood | 13 x 13 | 25 x 25 | 100 | 5 | 356030 | 356031 |

| Water spring | Ø column [cm] | Base [cm] | Height [cm] | Weight [kg] | Item no. stone grey |
|--------------|---------------|-----------|-------------|-------------|---------------------|
| Rondo | 12 | 19 | 90 | 3 | 356021 |

- Deceptively real and made of high-quality, weather-resistant plastic
- Incl. 19 mm (¾") chrome outlet tap for convenient water drawing
- Easy to assembly – holes already drilled into the base
- Connection possibility from below via 19 mm (¾") hose connection





Stone fountain



| Stone fountain | Width [cm] | Depth [cm] | Height [cm] | Weight [kg] | Item no. light granite | Item no. redstone |
|----------------|------------|------------|-------------|-------------|------------------------|-------------------|
| Venezia | 44 | 52 | 90 | 7 | 356100 | 356102 |

| Stone fountain | Width [cm] | Depth [cm] | Height [cm] | Height basin [cm] | Weight [kg] | Item no. light granite | Item no. redstone |
|----------------|------------|------------|-------------|-------------------|-------------|------------------------|-------------------|
| Roma | 54 | 58 | 100 | 25 | 8 | 356101 | 356103 |



TIP
Ideal as an additional tapping point for the Garden Comfort, Eco-Plus and Professional complete packages.
www.graf.info/rainwater-harvesting

Figure above:
Venezia stone fountain redstone

Figure on the left:
Roma stone fountain lightgranite

Figure on the right:
Roma stone fountain redstone



- Deceptively real and made of high-quality, weather-resistant plastic
- Incl. 19 mm (¾") nostalgic outlet tap for convenient water drawing
- Pre-assembled to be ready for connection
- Connection possibility from below via 19 mm (¾") hose connection




Cubus garden tank



| Volume [L] | Width [cm] | Depth [cm] | Height [cm] | Weight [kg] | Item no. dark green | Item no. concrete green |
|------------|------------|------------|-------------|-------------|---------------------|-------------------------|
| 1000 | 80 | 80 | 184 | 26 | 326040 | 326041 |






TIP
Chrome outlet tap
Item no. 330282
For details see page 66

Figure above:
Cubus garden tank dark green

Figure on the left:
The tank has three
integrated threads

Figure on the right:
Cubus garden tank concrete green



TIP
Speedy rain collector
Downpipe filter with filter insert
item no. 503040
For details see page 61



Garden tank Classico

- Suitable for installation in the garden and in the cellar
- Expandable as required
- With 19 mm (¾") threaded connection

| Volume [L] | Width [cm] | Depth [cm] | Height [cm] | ø Cover [cm] | Weight [kg] | Item no. dark green |
|---------------------|------------|------------|-------------|--------------|-------------|---------------------|
| 650 | 80 | 60 | 192 | 18 | 28 | 326030 |
| 1,300 ¹⁾ | 165 | 60 | 192 | 18 | 56 | 326035 |
| 2,600 ²⁾ | 335 | 60 | 192 | 18 | 112 | 326036 |

¹⁾ Set consists of 2 x 650 L tank
Incl. connection set (drill, seal, connection piece)

²⁾ Set consists of 4 x 650 L tank
Incl. connection set (drill, seal, connection piece)

Garden tank

- Suitable for installation in the garden and in the cellar
- Expandable at will
- Comfortable cleaning thanks to large ø38 cm cover
- Cover with child safety lock
- Transparent universal hose set, also serves as fill level indicator
- Incl. sieve cap in the inside cover

| Volume [L] | Width [cm] | Depth [cm] | Height [cm] | ø Cover [cm] | Weight [kg] | Item no. dark green |
|------------|------------|------------|-------------|--------------|-------------|---------------------|
| 500 | 88 | 72 | 108 | 38 | 23 | 326022 |
| 750 | 88 | 72 | 161 | 38 | 39 | 326010 |

Top-Tank

- Inexpensive solution for overground rainwater harvesting
- Extremely stable
- Expandable as required
- Moulded sockets: 2 x DN75, 2 x DN110 and 1 x DN200 suitable for standard HT/KG pipes
- Convenient for transport

| Volume [L] | ø max [cm] | Height [cm] | Weight [kg] | Item no. dark green |
|------------|------------|-------------|-------------|---------------------|
| 1300 | 118 | 156 | 30 | 323001 |

Accessories

DN75 extension set

Consisting of 2 pieces of special seals
(without drill and connecting pipes)

Item no. 322010

Floating 1" suction fitting

without hose

Item no. 330054

DN75 drill

with drive arbour

Item no. 202002



Figure above:
Classico garden tank 650 L

Figure on the left:
Garden tank 750 L

Figure on the right:
Top-Tank 1,300 L

TIP
Speedy rain collector
Downpipe filter with filter insert
item no. 503040
For details see page 61



Water butts



Lanzarote design water butt, graphite grey

Incl. cover, outlet tap and child-proof lock

| Volume [L] | Ø max [cm] | Height [cm] | Item no. |
|------------|------------|-------------|----------|
| 300 | 82 | 86 | 500222 |

Lanzarote water butt stand



| Height [cm] | Item no. graphite grey |
|-------------|------------------------|
| 33 | 502015 |



Siena design water butt, taupe

Incl. cover, outlet tap and child-proof lock

| Volume [L] | Ø max [cm] | Height [cm] | Item no. |
|------------|------------|-------------|----------|
| 300 | 82 | 86 | 500227 |

Siena water butt stand



| Height [cm] | Item no. taupe |
|-------------|----------------|
| 33 | 502016 |



Square water butt, graphite grey

Incl. cover and outlet tap

| Volume [L] | Width [cm] | Depth [cm] | Height [cm] | Item no. |
|------------|------------|------------|-------------|----------|
| 300* | 80 | 66 | 92 | 501204 |

Water butt stand



| Height [cm] | Item no. graphite grey |
|-------------|------------------------|
| 33 | 502021 |



Square water butt, dark green

Incl. cover and outlet tap

| Volume [L] | Width [cm] | Depth [cm] | Height ¹⁾ [cm] | Item no. |
|------------|------------|------------|---------------------------|----------|
| 203 | 70 | 70 | 82 | 501205 |
| 300* | 80 | 66 | 92 | 501206 |
| 520* | 124 | 80 | 93 | 501207 |

Water butt stand



| suitable for square water butt [l] | Height [cm] | Item no. |
|------------------------------------|-------------|----------|
| 203 | 33 | 502001 |
| 300 | 33 | 502004 |
| 520 | 33 | 502005 |



Round water butt, dark green

Incl. cover and outlet tap

| Volume [L] | Ø max. [cm] | Height ¹⁾ [cm] | Item no. |
|------------|-------------|---------------------------|----------|
| 210 | 77 | 80 | 500212 |
| 310 | 80 | 94 | 500213 |
| 510 | 100 | 110 | 500214 |

Water butt stand



| suitable for round water butt [l] | Height [cm] | Item no. |
|-----------------------------------|-------------|----------|
| 210 | 33 | 502001 |
| 310 | 33 | 502002 |
| 510 | 33 | 502003 |



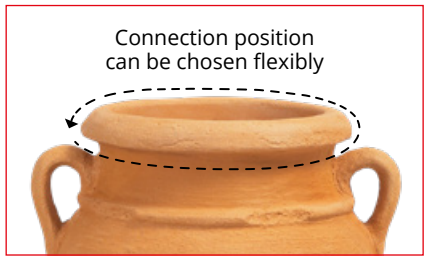
¹⁾ Height incl. cover
*Incl. metal brace for more stability

Connection made easy

DOWNPIPE FILTERS

>> from page 61

Downpipe filters reliably filter contaminants from rainwater and thus ensure the best water quality. Overflowing of the rain barrel is made impossible – thanks to the overflow stop. The excess water simply flows back into the rain pipe. In winter, the inflow to the rainwater tank is stopped with a flick of the switch.



UNIVERSAL HOSE SET

>> from page 66

The universal hose set and the Aqua-Go hose set (accessories) offer an additional drawing option. They serve to utilise the full tank volume and as a fill level indicator. The universal hose set is either screwed into the comfortable connection of the tank or installed on the tank using a drill and a seal (both included in the scope of supply). The Aqua-Go hose set can simply be screwed in if a threaded connection is available.

STRUCTURE AND CONNECTION OF A RAINWATER STORAGE TANK

This video shows you how to easily set up an overground tank, what to observe and how to connect it to the downpipe.

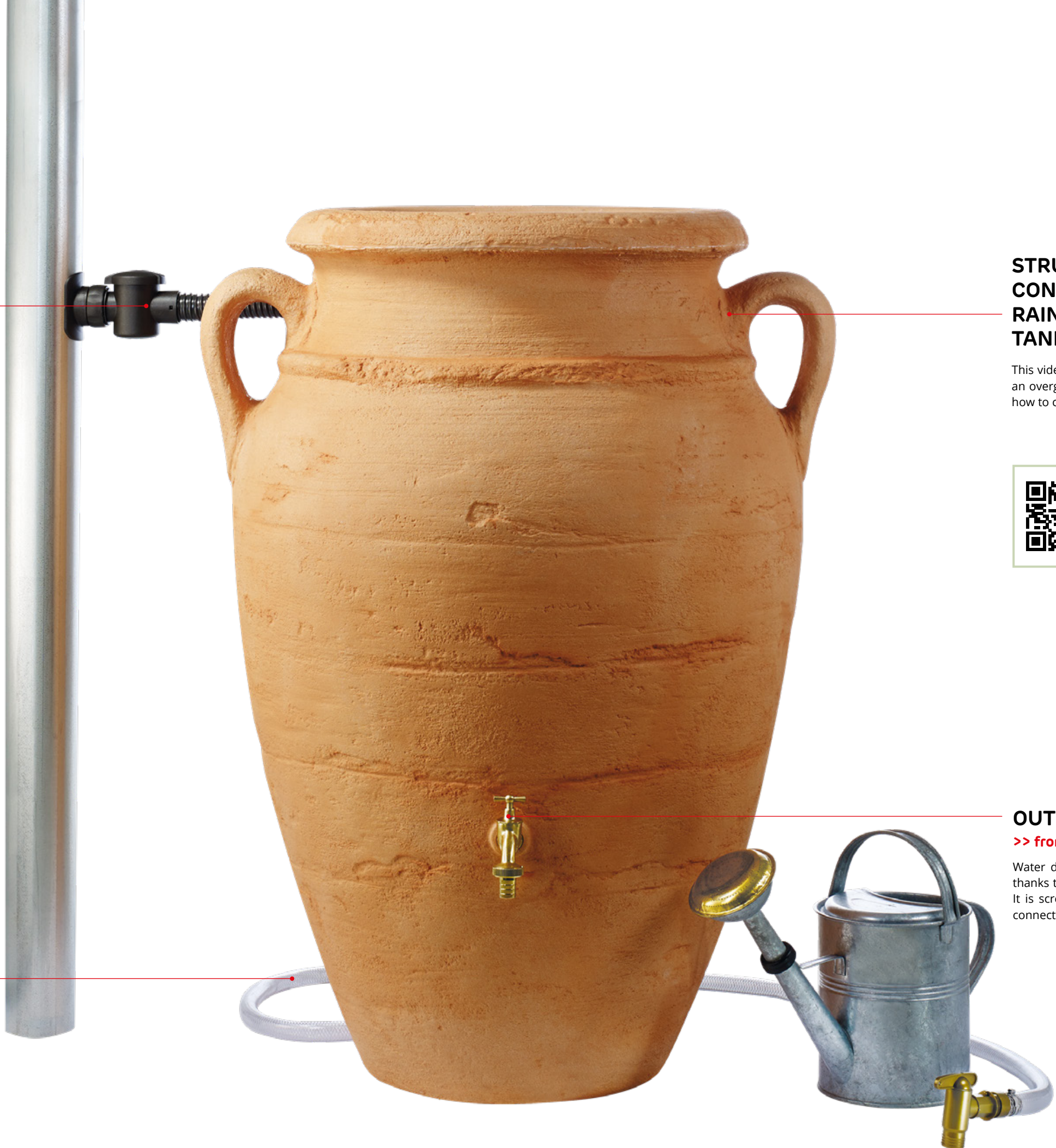


VIDEO TIP
You can find the
entire video at GRAF TV
at www.graf.info/v106

OUTLET TAP

>> from page 66

Water drawing becomes very convenient thanks to the GRAF outlet tap (accessory). It is screwed into the standard threaded connection of the tank without drilling.





Rain collector

THE ASSEMBLY WORLD CHAMPIONS

Installed in 5 minutes



VIDEO TIP
Downpipe filter assembly
www.graf.info/v107



| Rain collector | Speedy | Rapido |
|---|-----------------------|------------------------|
| Downpipe diameter | 70 – 100 mm | 70 – 100 mm |
| Overflow stop function | • | • |
| Max. recommended roof area | 80 m² | 80 m² |
| Water butt connection | 32 mm (1 ¼") | 32 mm (1 ¼") |
| Required distance between downpipe and wall | – | – |
| Switch for summer / winter operation | • | • |
| Filter element | Plastic sieve | – |
| Dimensions (L x W x H) | 16 cm x 6.5 cm x 9 cm | 9 cm x 5.5 cm x 5.5 cm |
| Item no. | 503040 | 503070 |

With filter insert



- It is not required to remove the downpipe for installation
- Complete set with core drill, tank connection seal and flexible 40 cm hose

✓ with filter insert
✓ Summer and winter operation



- It is not required to remove the downpipe for installation
- Complete set with core drill, tank connection seal and flexible 40 cm hose

✓ Summer and winter operation



Downpipe filters

THE SLIM MASTER FOR
LARGE ROOFS
For roof areas up to 200 m²



| Downpipe filters | Filling device de luxe* | Filling device | Filling device Mini | Regendieb Pro* | Regendieb | Foliage guard |
|---|---------------------------------|---------------------------------|---------------------------------|---------------------------------|--|--|
| Downpipe diameter | 70/80/100 mm | 70 – 100 mm | 50 – 60 mm | 70/80/100 mm | 70 – 100 mm | 70 – 100 mm |
| Overflow stop function | • | • | • | • | • | – |
| Max. recommended roof area | 80 m² | 50 m² | 50 m² | 200 m² | 200 m² | 80 m² |
| Water butt connection | 32 mm (1 ¼") | 25 mm (1") | 25 mm (1") | DN50, 32 mm (1 ¼") | DN70 DN50, 32 mm (1 ¼") | – |
| Required distance between downpipe and wall | 25 mm | 16 mm | 17 mm | 16 mm | 25 mm | 5 mm |
| Switch for summer / winter operation | • | • | • | • | • | • |
| Filter element | Plastic sieve | Plastic sieve | Plastic sieve | Stainless steel fine sieve | Stainless steel fine sieve | Plastic sieve |
| Dimensions | Height 15 cm Ø 15 cm | Height 11.5 cm Ø 13 cm | Height 9.5 cm Ø 8 cm | Height 25.5 cm Ø 13 cm | Height 25 cm Width 15 cm Depth 20 cm | Height 35 cm Width 11 cm Depth 18 cm |
| Colour Item no. | grey 503015 brown 503014 | grey 503011 brown 503010 | grey 503006 brown 503005 | grey 344200 brown 344201 | grey 343011 | grey 346013 |

- Incl. 25 cm hose and screw connection

- Filter concept with significantly larger filter surface
- Rotatable filter housing for flexible connection
- Incl. tank connection seal
- Self-cleaning and easy to maintain

- Incl. tank connection seal

- Reliably separates leaves and coarse contaminants
- Ideal in areas with a lot of leaves, e.g. as pre-filter
- Self-cleaning and easy to maintain
- Screen surface can be comfortably removed without removing the filter

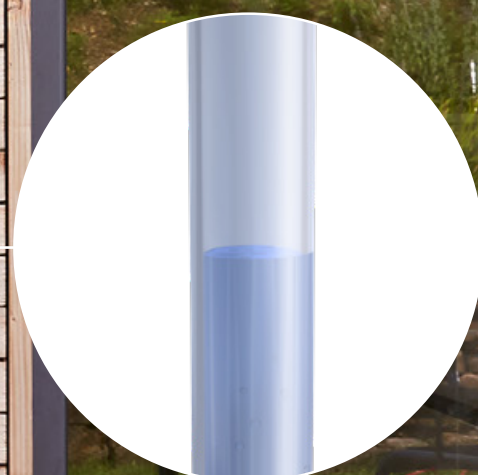


*For convenient maintenance, a downpipe sliding sleeve for downpipe sizes 70/80 mm is required

Aqua-Go 3/4" hose set

Convenient water extraction from any height, suitable for all overground rain-water tanks. The transparent hose always shows the current water level up to a height of 2 m.

19 mm (3/4") Item no. 220022



Accessories – overground tanks



Chrome outlet tap design
This stylish chrome outlet tap is ideal for modern rainwater tanks from the Modern line. Polished chrome, size 19 mm (¾"), Teflon tape included.

| |
|-----------------|
| Item no. 330254 |
|-----------------|



Outlet tap
A must-have for any stylish tank! Suitable for all products of the Classic and Exclusive Line, size 19 mm (¾"), Teflon tape included.

| | |
|---------------|-----------------|
| brass | item no. 220011 |
| chrome | item no. 330282 |



Water butt outlet tap
With seal and lock nut
19 mm (¾").

| |
|-----------------|
| Item no. 504011 |
|-----------------|



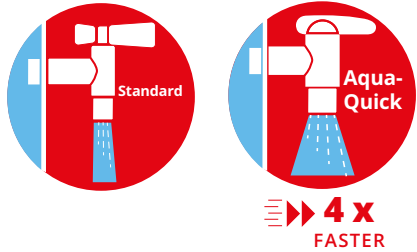
Aqua-Quick plastic tap
So that water can flow faster!
The Aqua-Quick plastic tap has a 4 x faster water flow rate than conventional outlet taps. In brass design, suitable for all overground tanks and water butts, size 19 mm (¾"), with sealing ring and lock nut.

| |
|-----------------|
| Item no. 504040 |
|-----------------|



Aqua-Quick plastic tap set, 4 pieces
So that water can flow faster! Complete set of plastic tap in brass design consisting of: Tap with seal and screw connection, connection piece for commercially available hose coupling, 13 mm (½") and 19 mm (¾"), union nut and seals.

| |
|-----------------|
| Item no. 504044 |
|-----------------|



Universal ¾" hose set
Set for complete emptying and water level indication of overground rainwater storage tanks. Consisting of 2.15 m flexible hose, Aqua-Quick plastic tap, drill and assembly accessories.
Suitable for **ever** tank.

| |
|-----------------|
| Item no. 220015 |
|-----------------|



Tank screw connection
With internal 19 mm (¾") thread made of plastic, suitable for all outlet taps.

| |
|-----------------|
| Item no. 504025 |
|-----------------|



Outlet tap with tank screw connection
Suitable for Hercules, Top and Garden tanks. Brass, size 19 mm (¾"), incl. Teflon tape.

| |
|-----------------|
| Item no. 330044 |
|-----------------|



Water butt connection set
Consisting of two hose nozzles with lock nut and 25 cm hose.

| | |
|------------------------------|-----------------|
| 19 mm (¾") | item no. 504017 |
| 19 mm (¾") with drill | item no. 504018 |
| 32 mm (1 ¼") | item no. 330031 |
| 51 mm (2") | item no. 330040 |



Flex-Comfort connection set
Extra-long and highly flexible connection set (40 cm) for connecting rainwater tanks and for connecting to the downpipe filters Regendieb and Regendieb Pro. Incl. extensive assembly accessories.

Scope of supply:
Flexible 40 cm connection hose, core drill and hose nozzle;
2 x connection pieces each, inlet seal and hose clamp.

| | |
|--------------|-----------------|
| grey | item no. 220019 |
| brown | item no. 220020 |



Water butt child-proof lock / wind protection
For water butt cover (reusable), 4 pieces

| |
|-----------------|
| Item no. 504016 |
|-----------------|



Hose connector 1"
for 32 mm hose, incl. seal and lock nut

| |
|-----------------|
| Item no. 220021 |
|-----------------|



Water butt overflow bend
With hose connection

| | |
|---------------------|-----------------|
| 32 mm (1 ¼") | item no. 330041 |
| 51 mm (2") | item no. 330043 |



for a greener planet



Professional rainwater harvesting

You can find more information about
rainwater harvesting in our catalogue
"Rainwater harvesting for your home".

Please note:

Information on all products and systems in this
brochure is subject to changes and errors.

Pictures and photographs are approximate only.

The applicable technical documentation for the
products shall control, which we will be happy to send
you on request.

All offers, deliveries and services are subject to our
general terms and conditions, which we will also be
happy to send you.

**GRAF worldwide please visit
www.graf.info**

Otto Graf GmbH
Kunststoffzeugnisse
Carl-Zeiss-Straße 2 – 6
DE-79331 Teningen

Tel.: +49 7641 589-0
Fax: +49 7641 589-50
export@graf.info

Photo copyright: stock.adobe.com
© contrastwerkstatt (page 2/3)

© Otto Graf GmbH/Item no. 960305/EN

