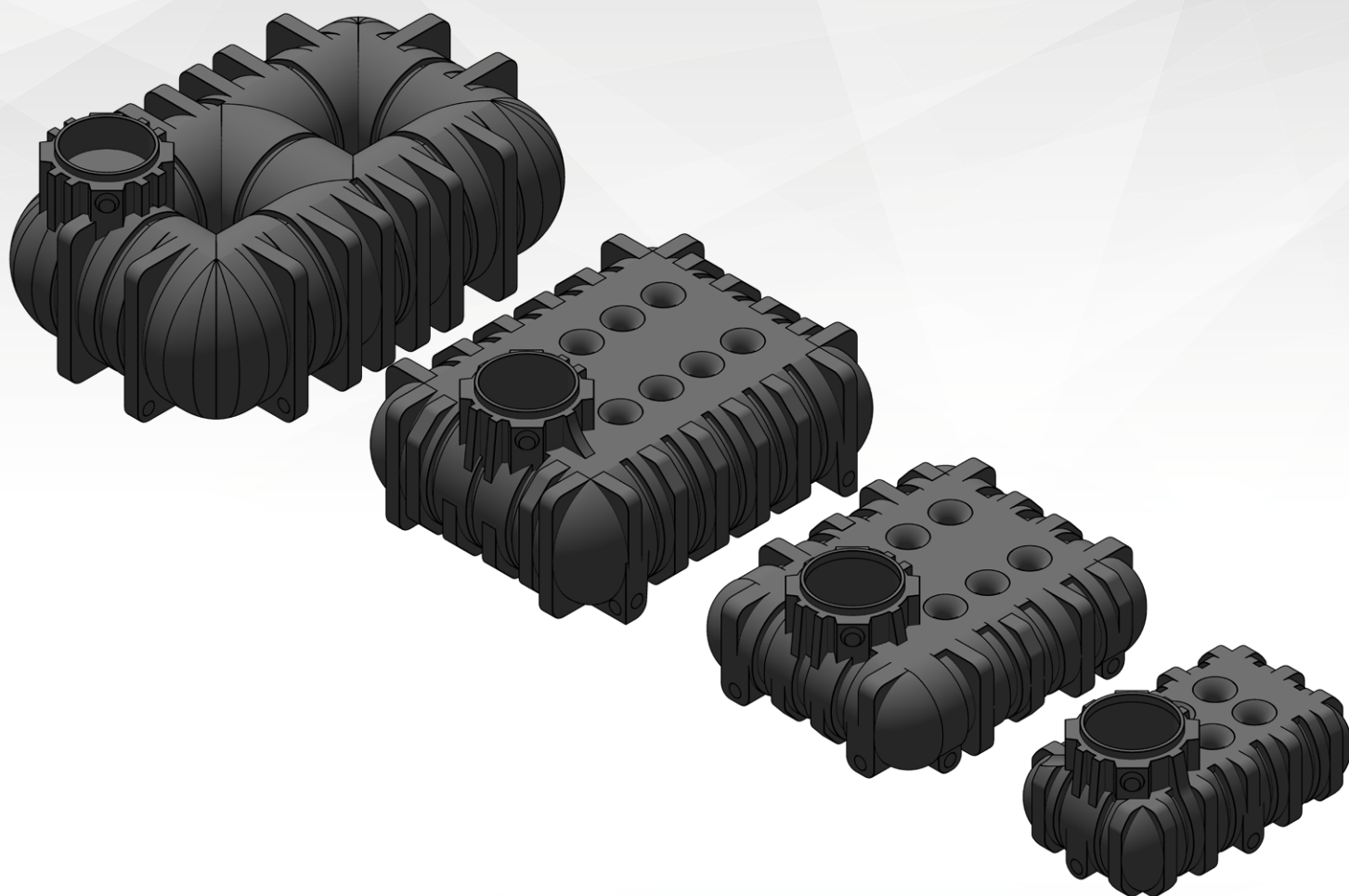




Revit Families

MANUAL HANDLING
FLAT TANK PLATIN + ACCESSORIES



GENERAL

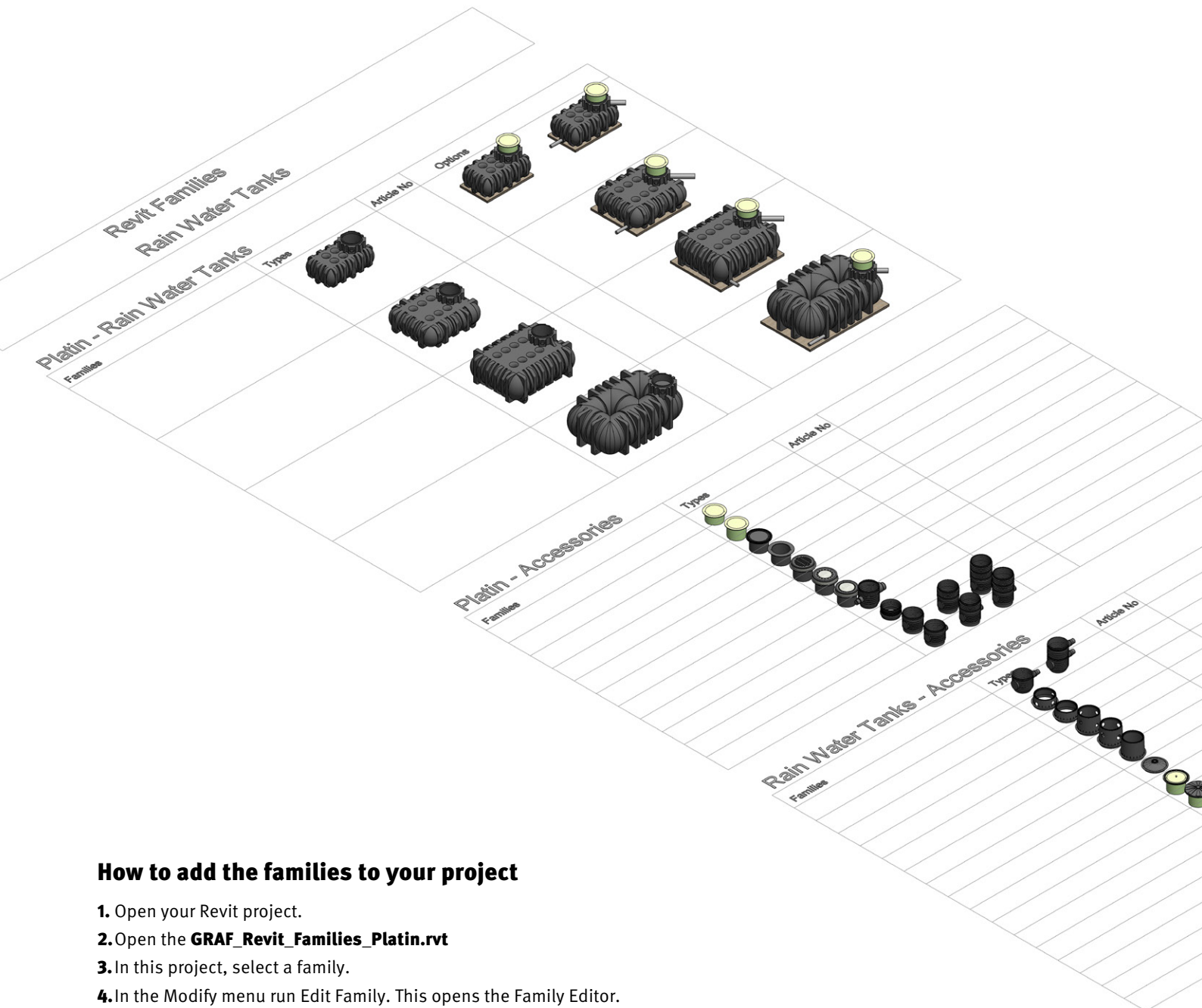
REVIT Flat Tank Platin + Accessories

Revit Version

The GRAF Revit Families are created in the english version of Revit 2016.

Revit Project

The Revit project **GRAF_Revit_Families_Platin.rvt** contains all tank and accessories families of the Platin series. The families are created on the Revit category Specialty Equipment.



How to add the families to your project

1. Open your Revit project.
2. Open the **GRAF_Revit_Families_Platin.rvt**
3. In this project, select a family.
4. In the Modify menu run Edit Family. This opens the Family Editor.
5. From here, run Load into Project (or Load into Project and Close) and select your project.
The family is available now in the project browser of your project under Families > Specialty Equipment.
The family types can be dragged into your drawing area.
6. You can close the family you have opened. You do not need to save it, as all families and types are still available in the **GRAF_Revit_Families_Platin.rvt**.

*Alternatively, use Insert > Load Family to load the downloaded single families directly in your project.
In this case, you do not need to open the overview project.*

PROPERTIES

REVIT Flat Tank Platin + Accessories

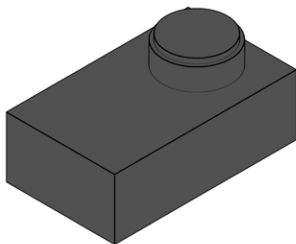


Correct planning

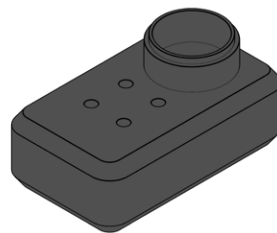
For correct planning, the information in the product-specific installation instructions must be observed.

Detail Levels

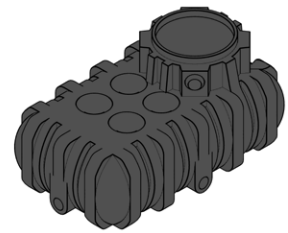
The GRAF families support the Revit detail levels Coarse, Medium and Fine.



coarse



medium

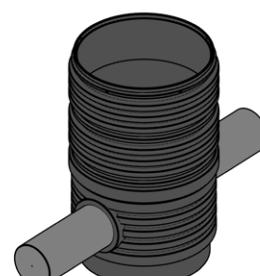
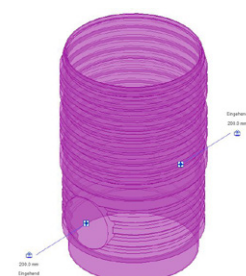
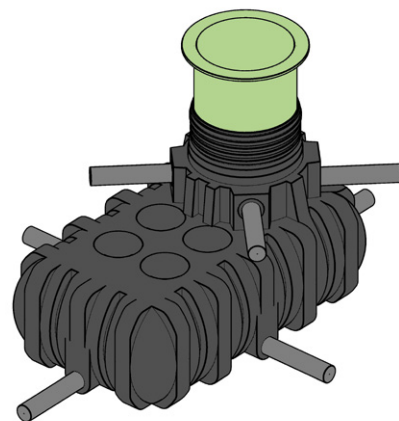
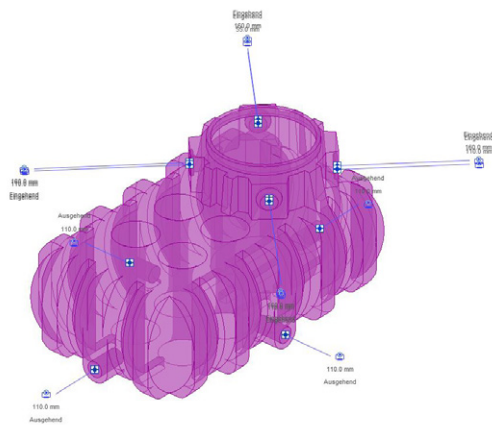


fine

Connectors

Piping systems can be designed using the connectors on the tanks and accessories.

Flat tank platin + Accessories

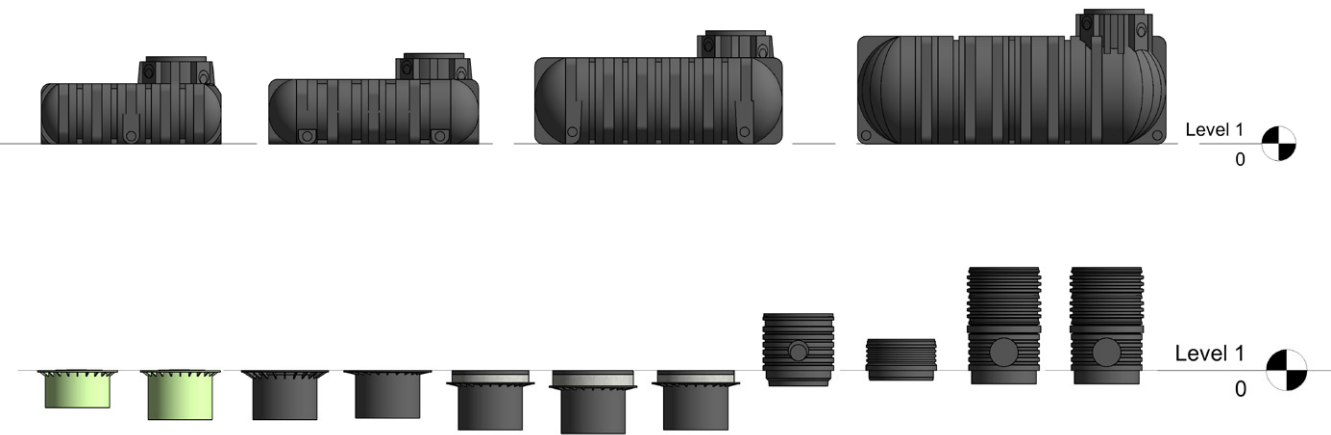


PROPERTIES

REVIT Flat Tank Platin + Accessories

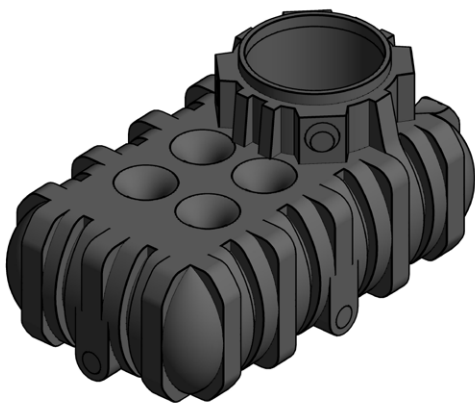
Base of the families

The base points in the families are in x/y-direction the center, in z-direction on the bottom edge for the tanks, for accessories based on the usage of the families.

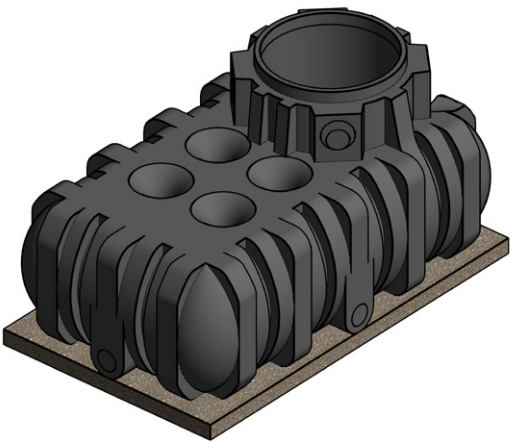


Show Gravel

Defines the visibility of the gravel layer below the tank.



| Konstruktion | | ⌆ |
|--------------|--------------------------|--------------------------|
| Show Gravel | <input type="checkbox"/> | <input type="checkbox"/> |



| Konstruktion | | ⌆ |
|--------------|-------------------------------------|--------------------------|
| Show Gravel | <input checked="" type="checkbox"/> | <input type="checkbox"/> |

TYPE PROPERTIES

REVIT Flat Tank Platin + Accessories



The Type Properties contain Meta data like article number or hyperlinks to technical information. The material parameter is already set with predefined GRAF materials.

Type Properties

Family: GRAF Flat Tank Platin 1500L
Type: Platin 1500L
Load...
Duplicate...
Rename...

Type Parameters

| Parameter | Value | = |
|-----------------------------------|---------------------|---|
| Construction | | |
| Excavation Width | 1450.0 | |
| Excavation Length | 2300.0 | |
| Excavation Height | 1400.0 | |
| Distance from Solid Constructions | 1000.0 | |
| Materials and Finishes | | |
| Material | Graf_PE | |
| Dimensions | | |
| Width | 1250.0 | |
| Length | 2100.0 | |
| Height | 1015.0 | |
| Mechanical | | |
| Connection Surfaces | 8x DN110 / 4x DN160 | |

GRAF Specialty Equipment Schedule

All product-relevant parameters are supplied in the specially prepared component list.

| A | B | C | D | E | F | G |
|--|-----------------|--|-----------------|--------|-------|--------|
| Count | Article Number | Family | Type | Length | Width | Height |
| GRAF Distributor Module for Shaft System DN400 | | | | | | |
| 1 | 330340 | GRAF Distributor Module for Shaft System DN400 | DN400-1000 | 475 | 475 | 1000 |
| 1 | 330340 | GRAF Distributor Module for Shaft System DN400 | DN400-650 | 475 | 475 | 700 |
| GRAF Distributor Module for Shaft System DN600 | | | | | | |
| 1 | 330361 | GRAF Distributor Module for Shaft System DN600 | DN600-585mm | 690 | 690 | 585 |
| 1 | 330361 | GRAF Distributor Module for Shaft System DN600 | DN600-1000mm | 690 | 690 | 1000 |
| GRAF DW Tele Dome Shaft Maxi - Pedestrian Load | | | | | | |
| 1 | 371012 + 381540 | GRAF DW Tele Dome Shaft Maxi - Pedestrian Load | DW Tele Dome Sh | 850 | 850 | 476 |
| GRAF DW Tele Dome Shaft Maxi - TW Cover | | | | | | |
| 1 | 371025 + 381545 | GRAF DW Tele Dome Shaft Maxi - TW Cover | DW Tele Dome Sh | 860 | 860 | 586 |
| GRAF Extension module for Shaft System DN400 | | | | | | |
| 1 | 330341 | GRAF Extension module for Shaft System DN400 | DN400-350 | 475 | 475 | 350 |
| 1 | 330341 | GRAF Extension module for Shaft System DN400 | DN400-600 | 475 | 475 | 600 |
| GRAF Flat Tank Platin 1500L | | | | | | |
| 1 | 390000 | GRAF Flat Tank Platin 1500L | Platin 1500L | 2100 | 1250 | 1015 |
| 1 | 390000 | GRAF Flat Tank Platin 1500L | Platin 1500L | 2100 | 1250 | 1015 |
| 1 | 390000 | GRAF Flat Tank Platin 1500L | Platin 1500L | 2100 | 1250 | 1015 |
| 1 | 390000 | GRAF Flat Tank Platin 1500L | Platin 1500L | 2100 | 1250 | 1015 |
| 1 | 390000 | GRAF Flat Tank Platin 1500L | Platin 1500L | 2100 | 1250 | 1015 |
| GRAF Flat Tank Platin 3000L | | | | | | |
| 1 | 390001 | GRAF Flat Tank Platin 3000L | Platin 3000L | 2450 | 2100 | 1050 |
| 1 | 390001 | GRAF Flat Tank Platin 3000L | Platin 3000L | 2450 | 2100 | 1050 |
| GRAF Flat Tank Platin 5000L | | | | | | |
| 1 | 390002 | GRAF Flat Tank Platin 5000L | Platin 5000L | 2890 | 2300 | 1315 |



For more information about our Stormwater Management, Rainwater Harvesting or Wastewater Treatment, ask for our technical catalogue.